

## FLEXIBLE TACTILE PLATES

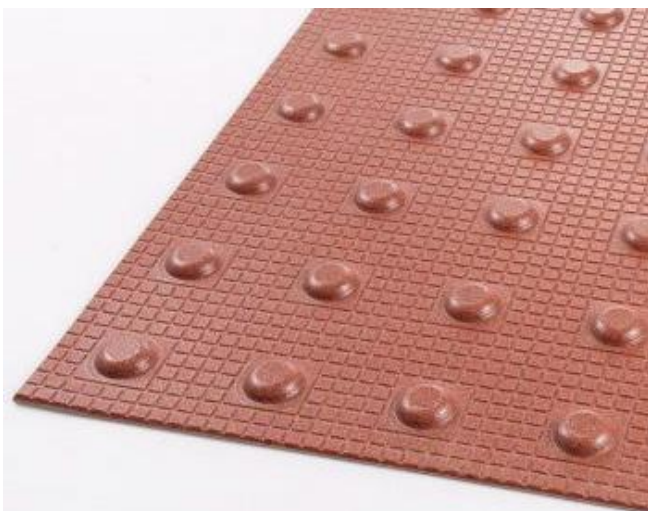
Tactile flooring is used to guide and inform the visually impaired. It is intended to warn of potential hazards. In the pedestrian environment, visually impaired people will seek out and use these floor surfaces. Each type of tactile flooring has been designed and developed for a specific use. The advantage of surface mounted tiles is that there is no need for excavation hence, any disruption is minimized.

### Flexible In-Line Blister Tactile Plates

Flexible in-line blister tactile flooring is designed to provide a warning to visually impaired people where the up stand on a kerb is less than 25mm, or where the footway has been made flush to the carriageway to aid wheelchair users.

This beige tile would be used at uncontrolled crossing points such as:

- Side road crossings;
- Busy vehicle crossovers such as supermarkets or fuel stations;
- In conjunction with pedestrian refuges;
- With flat topped road humps when used as road crossing points; and,
- Traffic signal controlled junctions with no pedestrian phase (where studs are used to indicate a road crossing Point).



### FOR MORE INFO

Call: 01206 322 899

Email: [sales@deck-safe.co.uk](mailto:sales@deck-safe.co.uk)

Visit: [www.decksafe.co.uk](http://www.decksafe.co.uk)

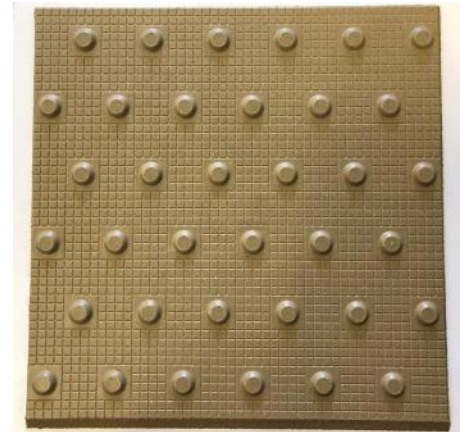
V2-25.01.2019



## FLEXIBLE TACTILE PLATES

### Flexible Off-Set Blister Tactile Plates

Quartzgrip™ off-set blister tactile flooring is used on railway platforms. It comprises flat topped domes set in evenly spaced rows parallel to the direction of travel along the platform. The off-set of the domes indicates the direction of travel towards the train.



### Flexible Corduroy Tactile Plates

Quartzgrip™ corduroy tactile flooring is used to warn visually impaired people of the presence of specific hazards, steps, ramps, level crossings or the approach to street platforms for Light Rapid Transport (LRT), such as trams and/or guided buses.

It is also used where a pedestrian footway joins/ merges with a designated cycle route. Essentially, off-set blister tactile flooring conveys the message "Hazard. Proceed with caution".

### FOR MORE INFO

Call: 01206 322 899

Email: [sales@deck-safe.co.uk](mailto:sales@deck-safe.co.uk)

Visit: [www.decksafe.co.uk](http://www.decksafe.co.uk)

V2-25.01.2019



## FLEXIBLE TACTILE PLATES

### MATERIAL CHARACTERISTICS



#### Quality Assurance

Manufactured in accordance with our ISO 9001 accredited Quality Management System, the structural integrity of the specified material is high grade. A suggested life span of 10-15 years is expected, but not guaranteed, and is based on a number of variables: environmental, installation process, maintenance, loading and traffic conditions.



#### Slip Resistance

Our Flexible Tiles have been tested the requirements of BS 7976-2:2002 in wet and dry conditions. The Corduroy Tiles achieved a PTV of 59.4 in dry conditions & 44 in wet conditions, whilst our standard In-Line & Off-Set Tiles achieved a PTV of 63 in dry conditions, and 39 in wet conditions.

All PTV ratings achieved are regarded as being of "Low Slip Potential" accordance with UK Slip Resistance Group guidelines



#### Self-Coloured

All flexible tactile flooring is pigmented throughout during manufacture, and does not require any secondary treatment such as powder coating or paint spraying.



#### Chemical Resistance

Resistant to a wide range of chemicals, across a wide temperature spectrum. Please refer to our separate chemical resistance chart SOS-DST-10



#### Fire Resistance

All products contain a fire resistant additive and comply with Euro Class 1. Performance is equivalent to BS476 part 7 class 2 flame spread to give a 30 minute burn time. An Acrylic variant tile is also available, which complies with section 12 of the Fire Precautions Act, 1971, London Underground Standards, and Building Regs (BS 476 Parts 6 & 7)



#### Composition

The tiles are manufactured from a hard wearing stone and resin composite ensuring excellent wearing with built in flexibility.



#### uV Stable

All panels are manufactured with a UV inhibitor to prevent UV degradation.

### FOR MORE INFO

Call: 01206 322 899

Email: [sales@deck-safe.co.uk](mailto:sales@deck-safe.co.uk)

Visit: [www.decksafe.co.uk](http://www.decksafe.co.uk)

V2-25.01.2019



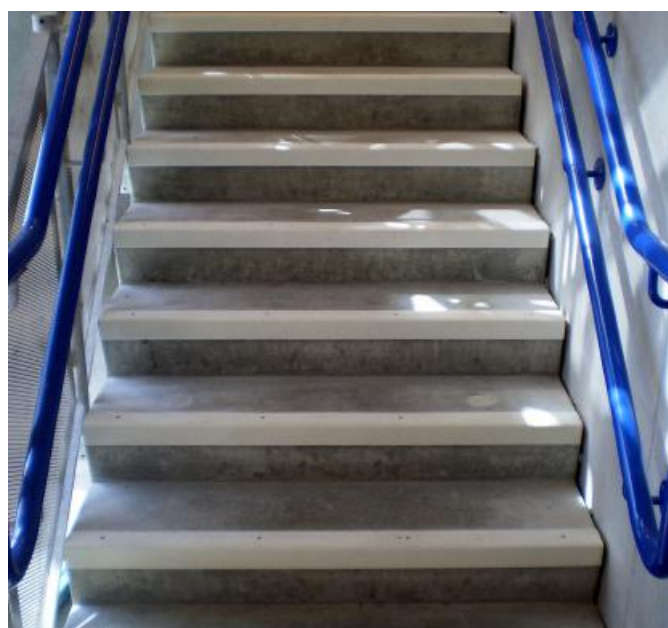


## FLEXIBLE TACTILE PLATES

### Related Products



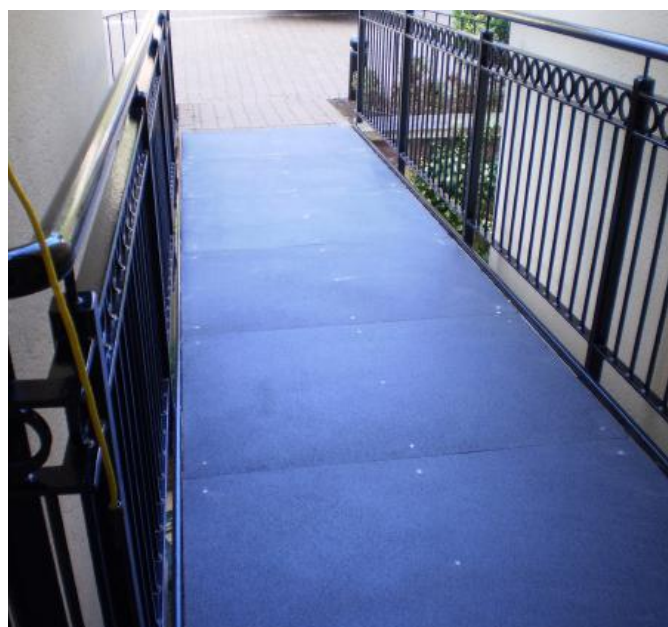
Stair Treads



Stair Nosing



Handrail



Flat Plate

### FOR MORE INFO

Call: 01206 322 899

Email: [sales@deck-safe.co.uk](mailto:sales@deck-safe.co.uk)

Visit: [www.decksafe.co.uk](http://www.decksafe.co.uk)

V2-25.01.2019

