

GRP ACCESS LADDERS



The Decksafe range of Fibreglass Access Ladders are manufactured from Glass Reinforced Plastic Pultruded structural sections, which when compared on a weight for weight basis, are far stronger than their metal equivalents. Composite ladders are ideally suited for installation in corrosive environments, such as those found in the water, waste, marine, and chemical industries.

All Composite Ladders and Safety Cages are manufactured in-house, in dimensional accordance with BS 4211, and BS 5395 (Stairs, Ladders and Walkways).

All ladders are typically 500mm wide overall, with rungs 400mm wide. Other bespoke sizes are available to suit individual site requirements upon request.

Ladder Stringers are formed from easy to grip 50 x 50mm box section with the rungs formed from an anti-slip serrated surface tube.



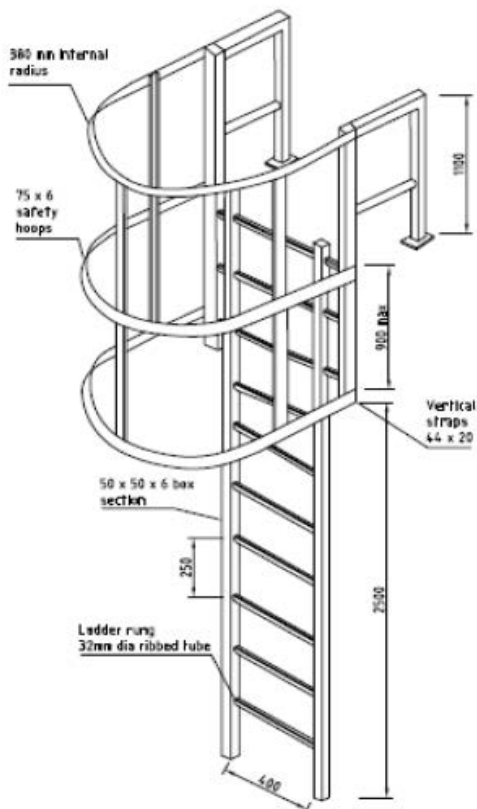
BENEFITS

- ✓ High Strength Composite Construction.
- ✓ Dimensionally and Thermally Stable.
- ✓ Manufactured to your individual specifications.
- ✓ Corrosion Resistant.
- ✓ Non Conductive.
- ✓ Easily Installed.
- ✓ Maintenance Free.

Ideal for most applications including:

- Chemical Plants.
- Water and Waste Treatment Plants.
- Marine and Offshore.
- Petrochemical.
- Power Stations and Sub-Station.
- Moreover, many other applications requiring safe access to raised and underground areas.

GRP ACCESS LADDERS



Types of Ladders

1. Standard.

This is typically a straight ladder that could be used in a chamber or manhole to aid access through a trapdoor. Foot and Wall brackets are generally used, as it is generally easier to sit the ladder on the floor and then fix. A raised ladder may be specified in some situations, for example to prevent ragging up in a sewer.

2. With Safety Cage

Similar applications to a standard ladder, however for all ladders above 2.2m high, a safety cage must be included.

3. With a Walk-Through Top

(As per drawing) The top of the ladder is widened to allow ease of use, and is normally used to gain access to platforms with handrails.

Decksafe Ladders are available in either Yellow or Grey, and we can manufacture in-house to suit your exact site specifications and conform to BS4211 - Steel Ladders for Permanent Access, and BS5395 Part 3 - Code of Practice for the Design of Industrial Type Stairs, Permanent Ladders and Walkways.

Straight Ladders are available for heights of less than 2.2m.

We offer a choice of Stainless Steel or Fibreglass Wall Brackets to isolate the ladder from the wall by 200mm.

A GRP Box Foot or Pedestal is available for floor fixing.

For more information, or to obtain a budget quotation, please do not hesitate to contact us.



FOR MORE INFO

Call: 01206 322 899

Email: sales@deck-safe.co.uk

Visit: www.decksafe.co.uk

V3-25.01.2019

GRP ACCESS LADDERS

MATERIAL CHARACTERISTICS



Quality Assurance

Manufactured in accordance with our ISO 9001 accredited Quality Management System, the structural integrity of the specified material is high grade. A suggested life span of 25 years is expected, but not guaranteed, and is based on a number of variables: environmental, installation process, maintenance, loading and traffic conditions.



Chemical Resistance

GRP is resistant to a wide range of chemicals, across a wide temperature spectrum. GRP can be made using different resin systems to achieve specific chemical resistant properties. Please refer to chemical resistance chart DS-DST-10



Slip Resistance

The integral angular quartz gritted surface has been Tested in accordance with BS7976-2 and provides an exceptional level of slip resistance. Lifespan depends on frequency of use.



Fire Resistance

All products contain a fire resistant additive and comply with Euro Class 1 and ISO11952-2. Performance is equivalent to ASTM E84 class 1 and BS476 part 7class2 flame spread to give a 30 minute burn time.

| GRP Characteristics | Unit | Reference |
|---------------------------|-------------------------------|-----------|
| Voltage breakdown | 18K volts/mm | ASTM D149 |
| Density kg/m ³ | 2100 | BS 476 |
| Thermal Expansion Factor | 13 x 10 ⁻⁶ mm/mm°C | |
| Water Absorption rate | 0.45 x 24 hrs | ASTM D570 |
| Operating Temperature | -100°C to +200°C | BS 476 |

FOR MORE INFO

Call: 01206 322 899

Email: sales@deck-safe.co.uk

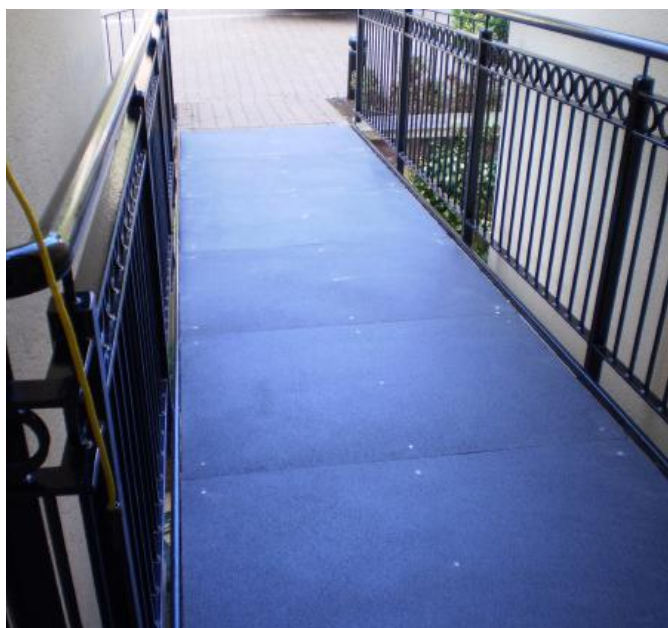
Visit: www.decksafe.co.uk

V3-25.01.2019



GRP ACCESS LADDERS

Related Products



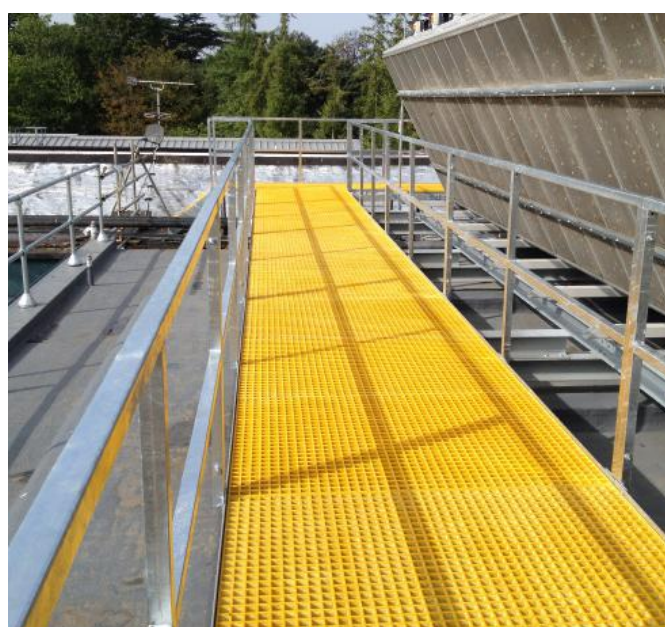
Flat Plate



Handrail



Ladder Rung Cover



Walkways

FOR MORE INFO

Call: 01206 322 899

Email: sales@deck-safe.co.uk

Visit: www.decksafe.co.uk

V3-25.01.2019

