

GRP TACTILE PLATES

Tactile flooring is used to guide and inform the visually impaired. It is intended to warn of potential hazards. In the pedestrian environment, visually impaired people will seek out and use these floor surfaces. Each type of tactile flooring has been designed and developed for a specific use. The advantage of surface mounted tiles is that there is no need for excavation hence, any disruption is minimized.

Quartzgrip® Fibreglass In-Line Blister Tactile Plates

Quartzgrip® in-line blister tactile flooring is designed to provide a warning to visually impaired people where the up stand on a kerb is less than 25mm, or where the footway has been made flush to the carriageway to aid wheelchair users.

This beige tile would be used at uncontrolled crossing points such as:

- Side road crossings;
- Busy vehicle crossovers such as supermarkets or fuel stations;
- In conjunction with pedestrian refuges;
- With flat topped road humps when used as road crossing points; and,
- Traffic signal controlled junctions with no pedestrian phase (where studs are used to indicate a road crossing Point).



FOR MORE INFO

Call: 01206 322 899

Email: sales@deck-safe.co.uk

Visit: www.decksafe.co.uk

V2-25.01.2019



GRP TACTILE PLATES

Quartzgrip® Fibreglass Off-Set Blister Tactile Plates

Quartzgrip® off-set blister tactile flooring is used on railway platforms. It comprises flat topped domes set in evenly spaced rows parallel to the direction of travel along the platform. The off-set of the domes indicates the direction of travel towards the train.



Quartzgrip® Fibreglass Corduroy Tactile Plates

Quartzgrip® corduroy tactile flooring is used to warn visually impaired people of the presence of specific hazards, steps, ramps, level crossings or the approach to street platforms for Light Rapid Transport (LRT), such as trams and/or guided buses. It is also used where a pedestrian footway joins/ merges with a designated cycle route. Essentially, off-set blister tactile flooring conveys the message "Hazard. Proceed with caution".



FOR MORE INFO

Call: 01206 322 899

Email: sales@deck-safe.co.uk

Visit: www.decksafe.co.uk

V2-25.01.2019

GRP TACTILE PLATES

MATERIAL CHARACTERISTICS



Quality Assurance

Manufactured in accordance with our ISO 9001 accredited Quality Management System, the structural integrity of the specified material is high grade. A suggested life span of 25 years is expected, but not guaranteed, and is based on a number of variables: environmental, installation process, maintenance, loading and traffic conditions.



Slip Resistance

The integral angular quartz gritted surface has been Tested in accordance with BS7976-2 and provides an exceptional level of slip resistance. Lifespan depends on frequency of use.



uV Stable

All panels are manufactured with a high quality UV inhibitor to prevent UV degradation.



Self-Coloured

All Quartzgrip® tactile flooring is pigmented throughout during manufacture, and does not require any secondary treatment such as powder coating or paint spraying. Standard colour is Beige (RAL1003).



Chemical Resistance

GRP is resistant to a wide range of chemicals, across a wide temperature spectrum. GRP can be made using different resin systems to achieve specific chemical resistant properties. Please refer to our separate chemical resistance chart SOS-DST-10.



Fire Resistance

All products contain a fire resistant additive and comply with Euro Class 1 and ISO11952-2. Performance is equivalent to ASTM E84 class 1 and BS476 part 7class2 flame spread to give a 30 minute burn time.



Light Weight and Durable

Weighing around 1/3 of the alternative solutions, Quartzgrip® moulded fibreglass is relatively lightweight in comparison, and can be manually manoeuvred into place without the requirement for mechanical assistance.

Quartzgrip® tactile floor is exceptionally durable, with an ability to withstand impact, reducing the risk of permanent bucking and deformation. Floor panels measure 400 x 400mm. They are easy to install, surface mounting with minimal downtime or groundwork required. Panels are hardwearing and weather resistant. They are: ideal for internal as well as external applications, and DDA and Building Regulations Compliant.

FOR MORE INFO

Call: 01206 322 899

Email: sales@deck-safe.co.uk

Visit: www.decksafe.co.uk

V2-25.01.2019

GRP TACTILE PLATES

Related Products



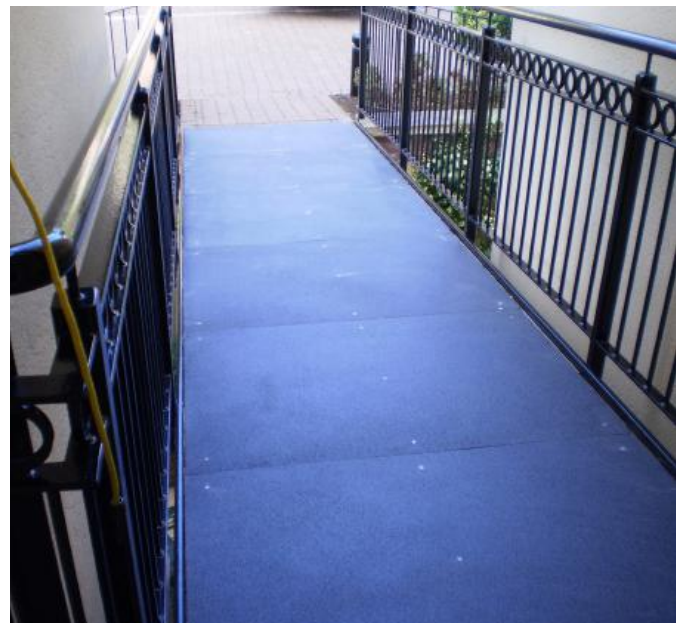
Stair Treads



Stair Nosing



GRP Handrail



Flat Plate

FOR MORE INFO

Call: 01206 322 899

Email: sales@deck-safe.co.uk

Visit: www.decksafe.co.uk

V2-25.01.2019

